



Quick Start Guide

Version 1.0.0



1.2.51.32.14084-000

Packing List



Device*1



QSG*1



Power Adapter*1



Quick Installation Board*1



Installation Position Map*1

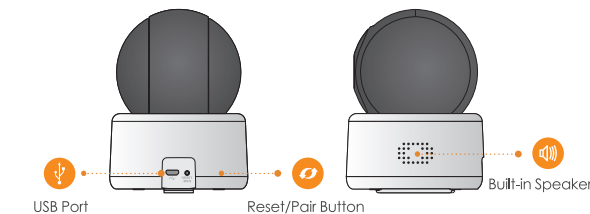
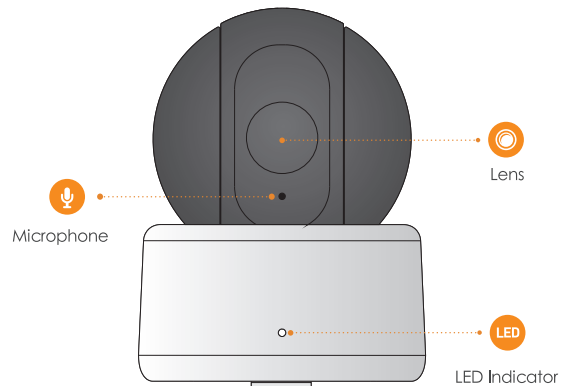


Screw Package*1



USB*1

Product Appearance



The following table shows more information about status of indicator light

Indicator Light Status	Device Status
Red light stably on	Booting
Green light slow flashing	Booting completed, await Wi-Fi config, enter smart config status;
Green light quick flashing	Wi-Fi smart config in progress, including WPS (Wi-Fi Protected Setup), management frame, etc.
Green light stably on	Wi-Fi connection succeeded, operate normally.
Red and green lights flash alternately	Device upgrade
Red light slow flashing	Network disconnection
Red light quick flashing	Device fail to boot up; SD card does not work

Note:

To reset, long press for 10 seconds till the light is off; to enable WPS, just press the button.



Operation with imou App

Step 1

Power on your camera with power adapter.

Step 2

Connect your smartphone to your Wi-Fi network, scan the QR code on the packing box, download and install the imou App.



Step 3

Run imou App, and register account for first use.

Step 4

Follow the steps below to add your camera .

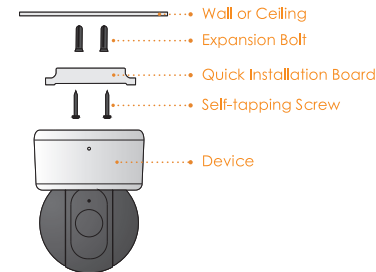
Note:

- If you have more cameras, please follow step 4 to add them one by one.
- If you want to change the Wi-Fi signal, please reset the camera to factory default and repeat step 4 to add the camera.

Device Installation

Note:

Please make sure the mounting surface can sustain at least 3X weight of the camera.



Step1 Dig holes on the proper mounting surface according to the hole sites of installation position map.

Step2 Knock the expansion bolts into the holes.

Step3 Use self-tapping screws to install quick installation board and fix it well.

Step4 Connect the device to power.

Step5 Adjust the device monitoring angle and stick the device on the quick installation board.

Disclaimer

- This quick start guide is for reference only. Minor difference might be found in user interface.
- All the design and software here are subject to change without prior written notice.
- All trademarks and registered trademarks mentioned are the properties of their respective owners.
- Please visit our website or contact your local service engineer for more information.
- If there is any uncertainty or controversy, please refer to our final explanation.